

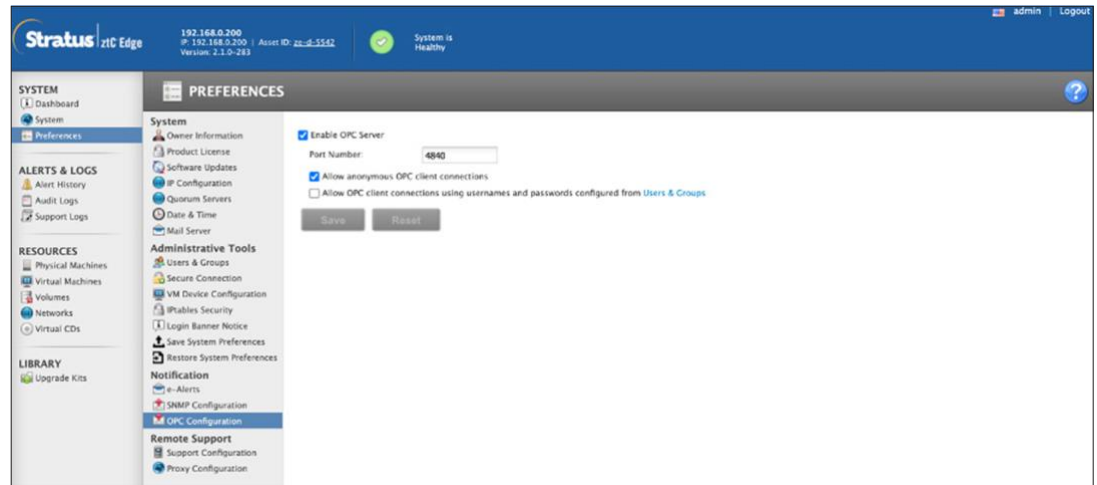


A Setup Guide for Stratus ztC Edge 250i OPC UA Integration into Ignition HMI



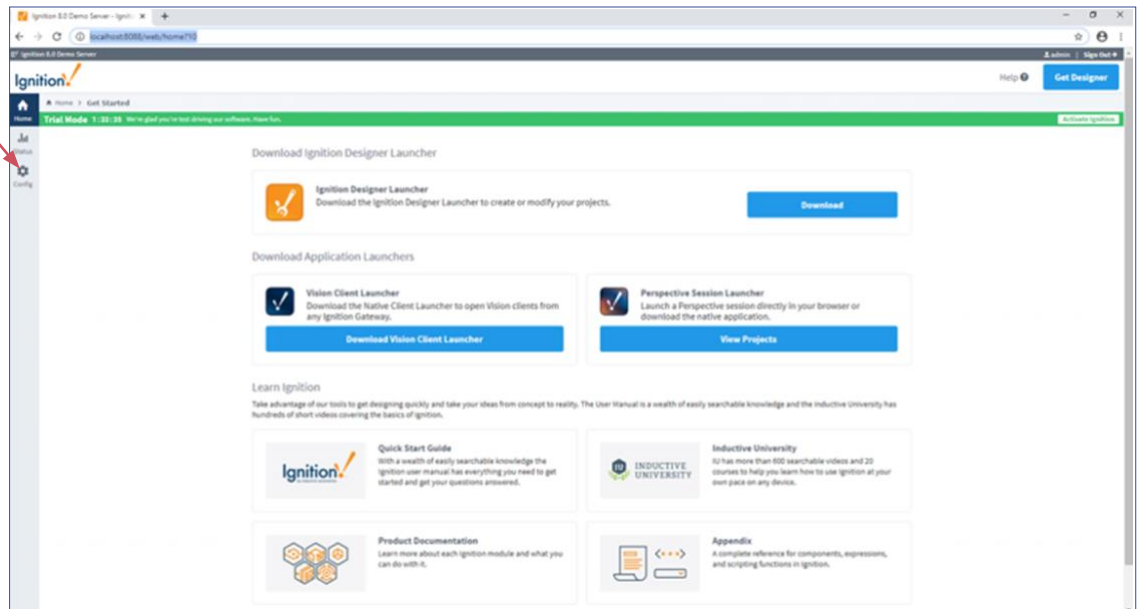
How to add and enable ztC OPC integration into Ignition HMI

Enable ztC OPC UA on ztC

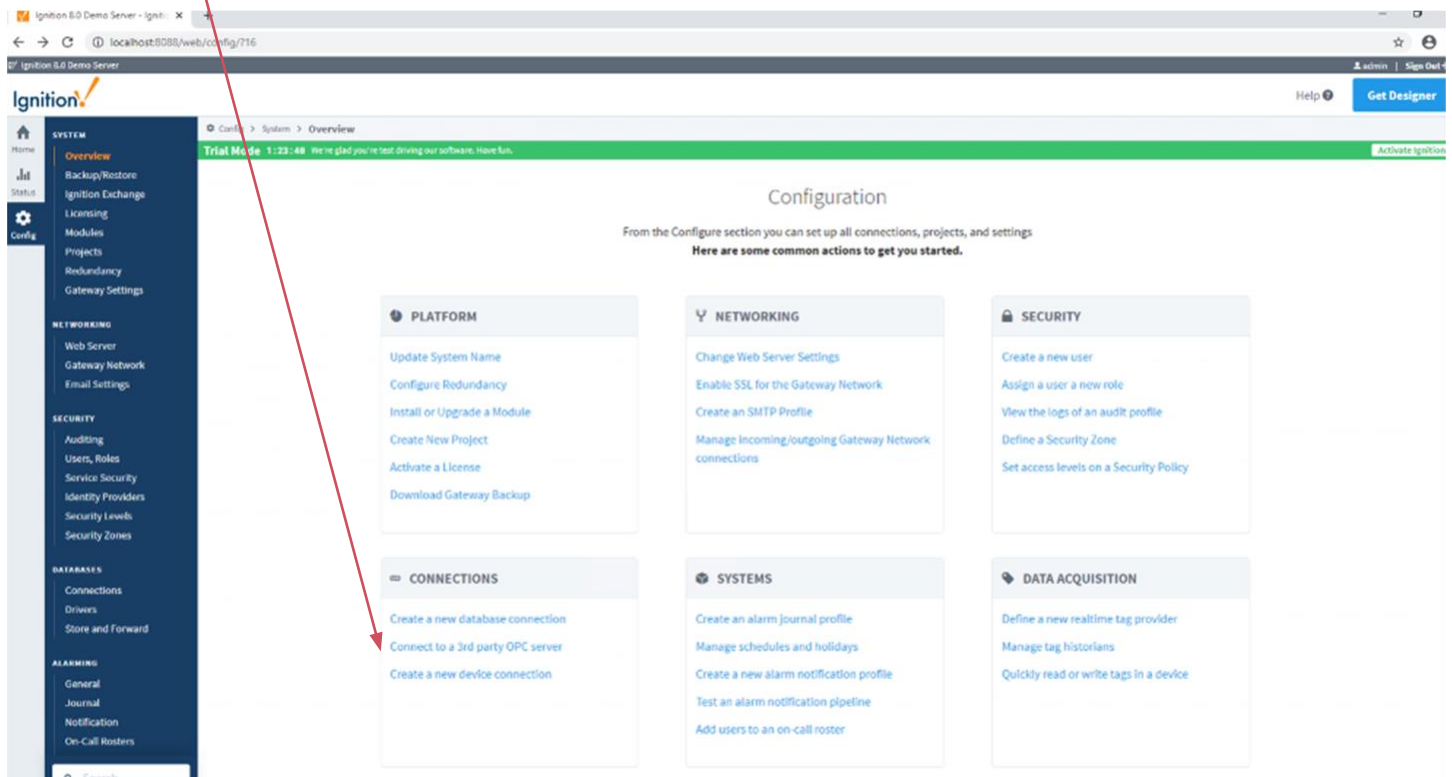


Create OPC Connection in Ignition

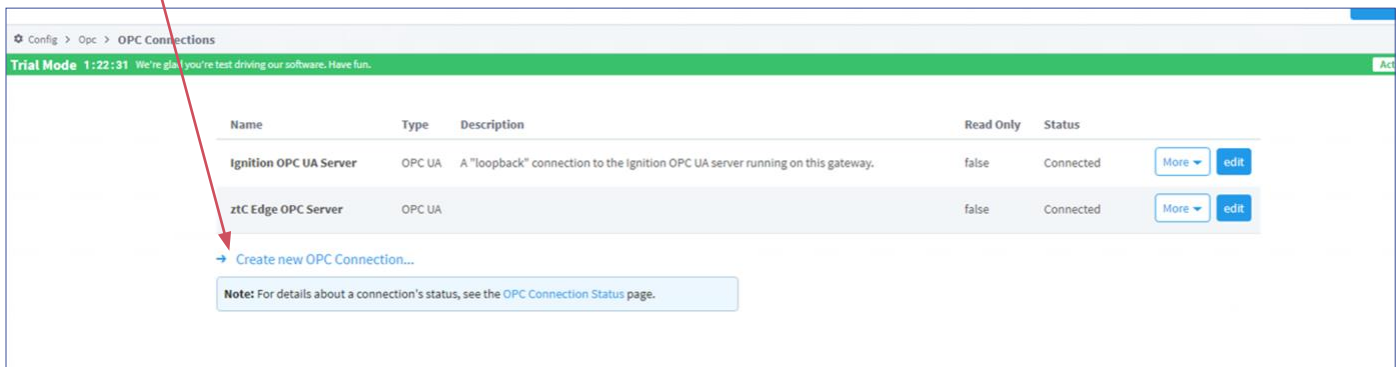
1. Open the Ignition local host web server <http://localhost:8088/web/home?10>
2. Select Config and enter username and password (Default is admin, password)



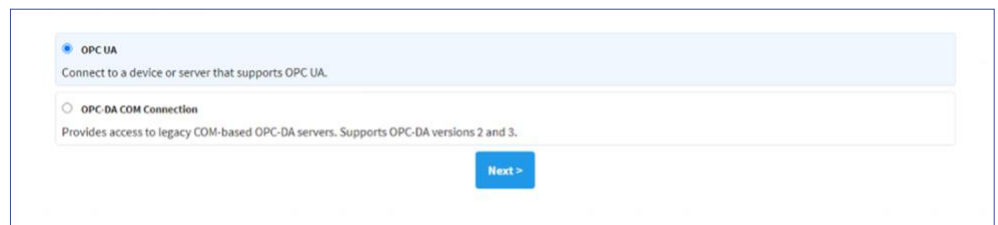
3. Under connection section select “Connect to 3rd party OPC server”



4. Select “Create new OPC Connection...”



5. Select “OPC UA” and then select “Next”



6. Enter the “Endpoint URL”
(opc.tcp://ztC_SystemIP:4840/)

Server Discovery [→ Skip to Advanced Configuration](#)

Endpoint URL

Example: opc.tcp://localhost:62541/discovery

[Next](#)

7. The ztC OPC UA will be auto detected if the connection is successful. Select “Next”

Choose a Server [→ Skip to Advanced Configuration](#)

ztC Edge OPC Server

- opc.tcp://node1:4840/

[Previous](#) [Next](#)

8. On the next window confirm “Substitute URL From Discovery” is selected with correct OPC UA URL of the ztC.

Specify an Alternate Discovery URL [→ Skip to Advanced Configuration](#)

The URL 'opc.tcp://node1:4840/' was unreachable. Please select an alternative below.

Substitute URL From Discovery

- opc.tcp://192.168.0.200:4840/

Use Another URL

[Previous](#) [Next](#)

9. Confirm Endpoint security and select “Next”

Select Endpoint [→ Skip to Advanced Configuration](#)

- opc.tcp://192.168.0.200:4840/

Security Policy: None
Security Mode: None

[Previous](#) [Next](#)

10. On the next window confirm all the selections and select “Finish”

[→ Skip to Advanced Configuration](#)

Confirm Connection Settings

Discovery URL: opc.tcp://192.168.0.200:4840/
Endpoint URL: opc.tcp://192.168.0.200:4840/
Endpoint Host Override:
Endpoint Security Mode: None
Endpoint Security Policy: None

[Previous](#) [Finish](#)

11. On the final screen you can enter the ztC OPC connection name and description and select “Create New OPC Connection”

Main

Name

Description

Enabled (default: true)

Read Only If selected, the connection to this OPC server will be read-only; all calls to write will fail. (default: false)

Authentication

Username

Password

Password
Re-type password for verification.

Show advanced properties

[Create New OPC Connection](#)

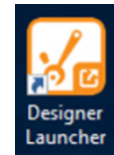
✓ Successfully created new OPC Connection "ztC Edge OPC Server"

Name	Type	Description	Read Only	Status	
Ignition OPC UA Server	OPC UA	A "loopback" connection to the Ignition OPC UA server running on this gateway.	false	Connected	More ▾ edit
ztC Edge OPC Server	OPC UA		false	Connected	More ▾ edit

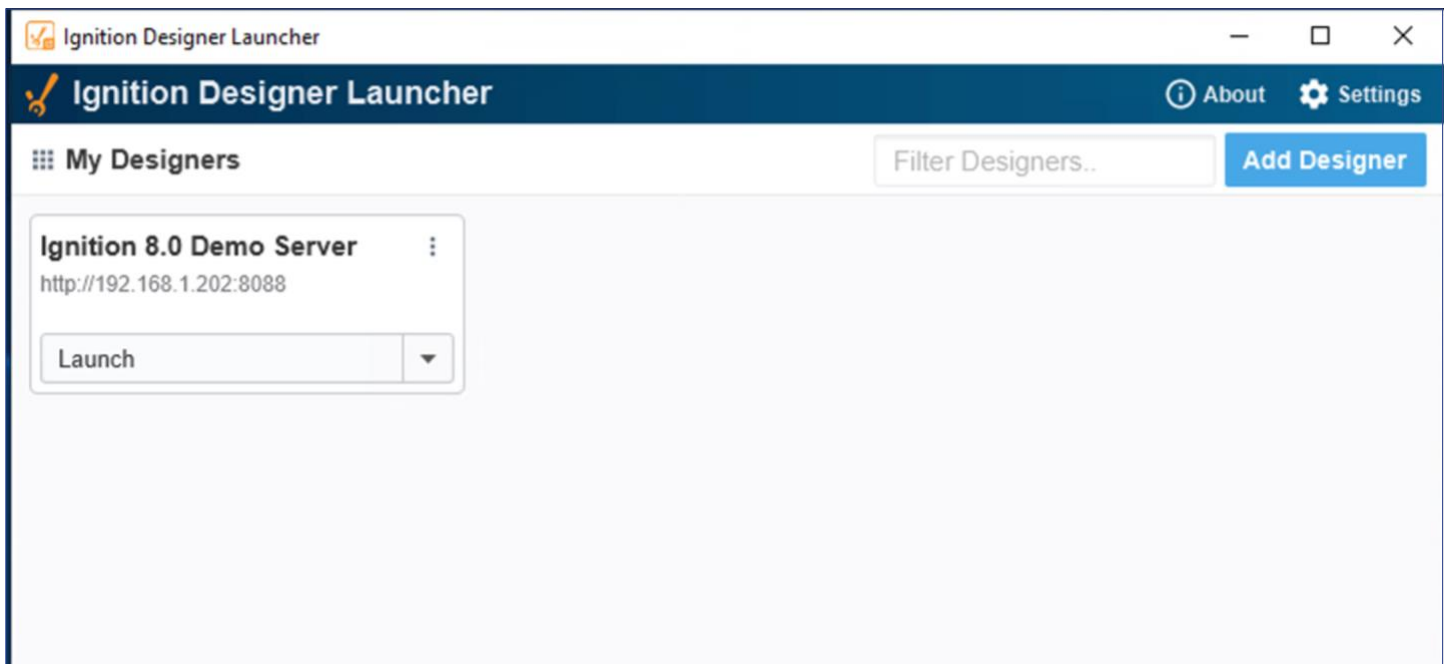
[→ Create new OPC Connection...](#)

Note: For details about a connection's status, see the [OPC Connection Status](#) page.

12. From the desktop or Window Start menu Select “Designer Launcher”



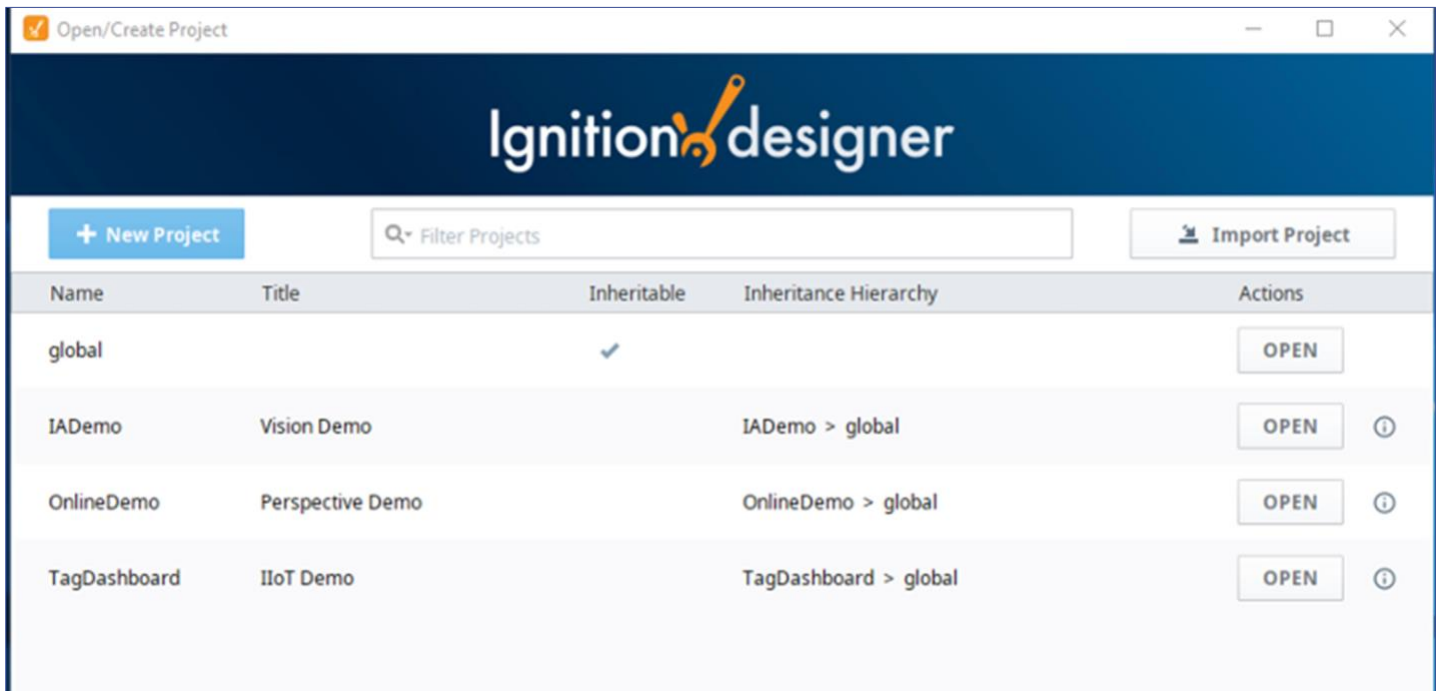
13. Once the Ignition Designer Launcher is open select the require application and then “Launch”



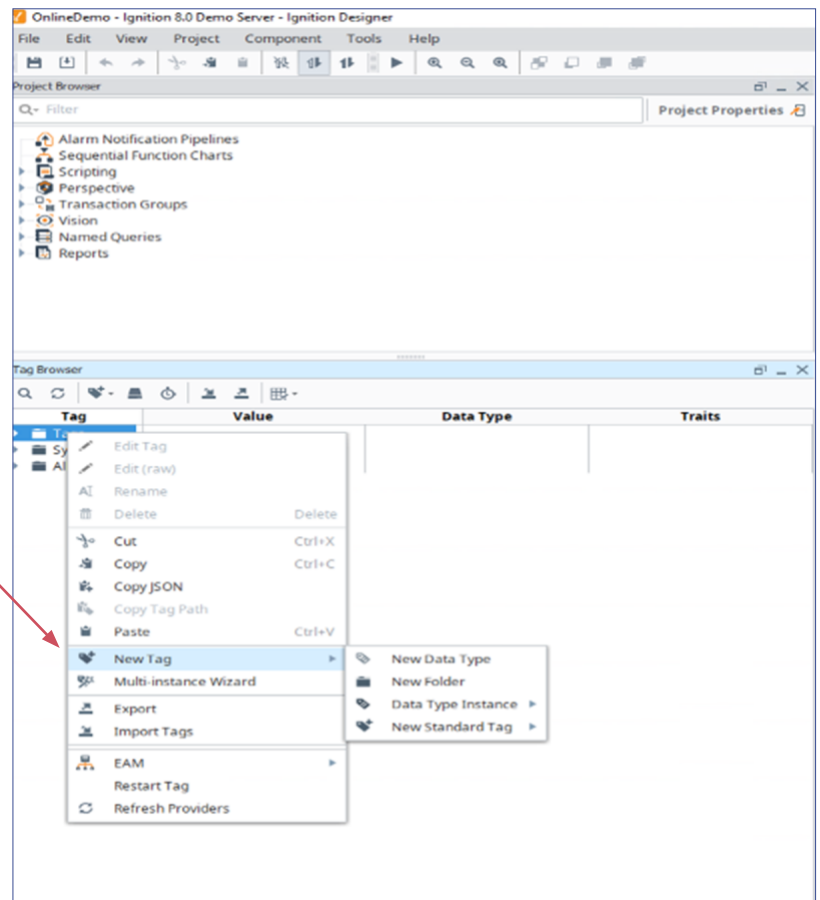
14. On Launch of the application it might ask you for Username and password (Default:admin,password)

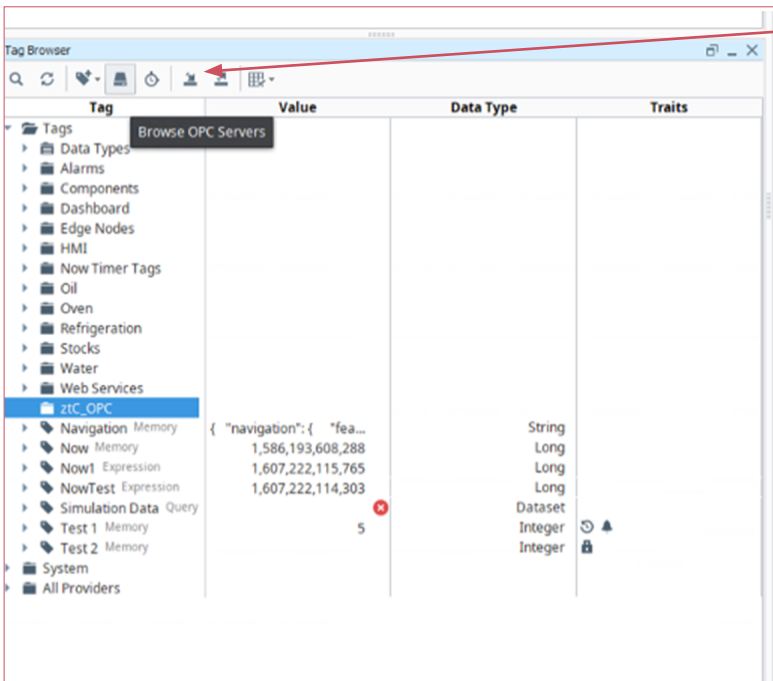


15. On next window open the preferred project.

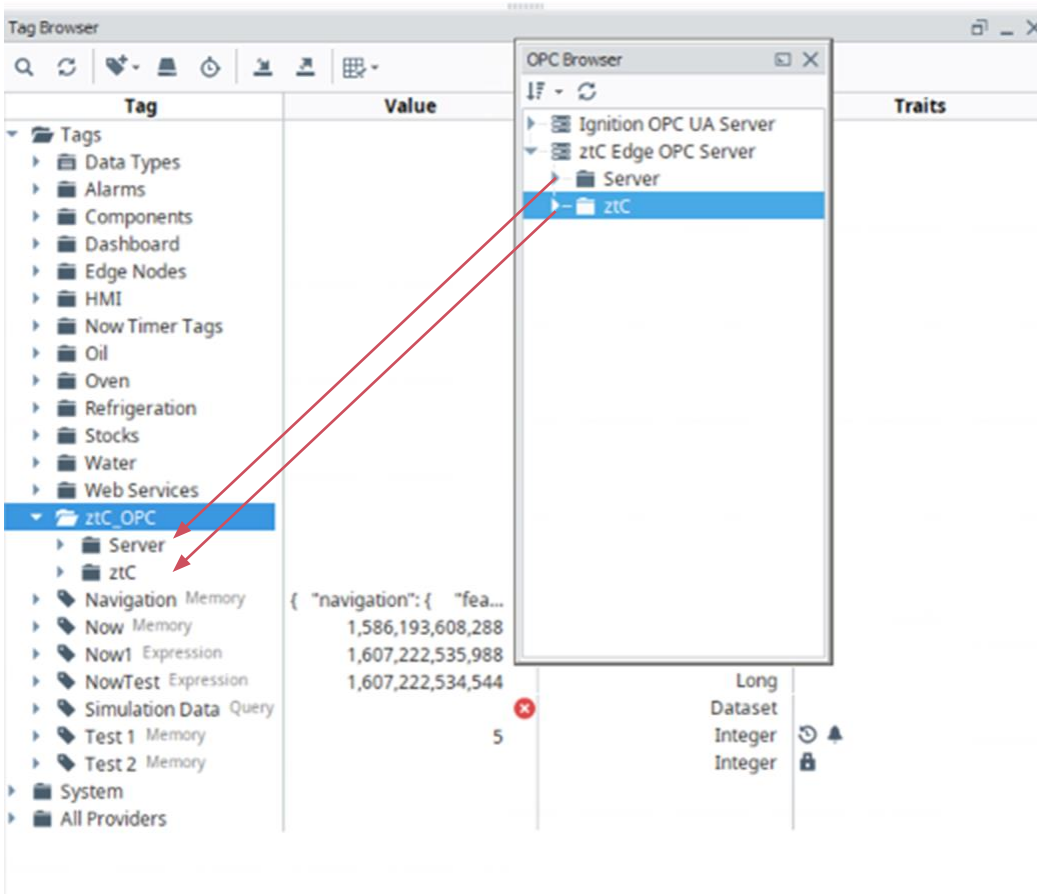


Once the Designer is open Create a new sub folder under the “Tags” folder and call it “ztC_OPC”





Select the "Browse OPC Servers" Icon



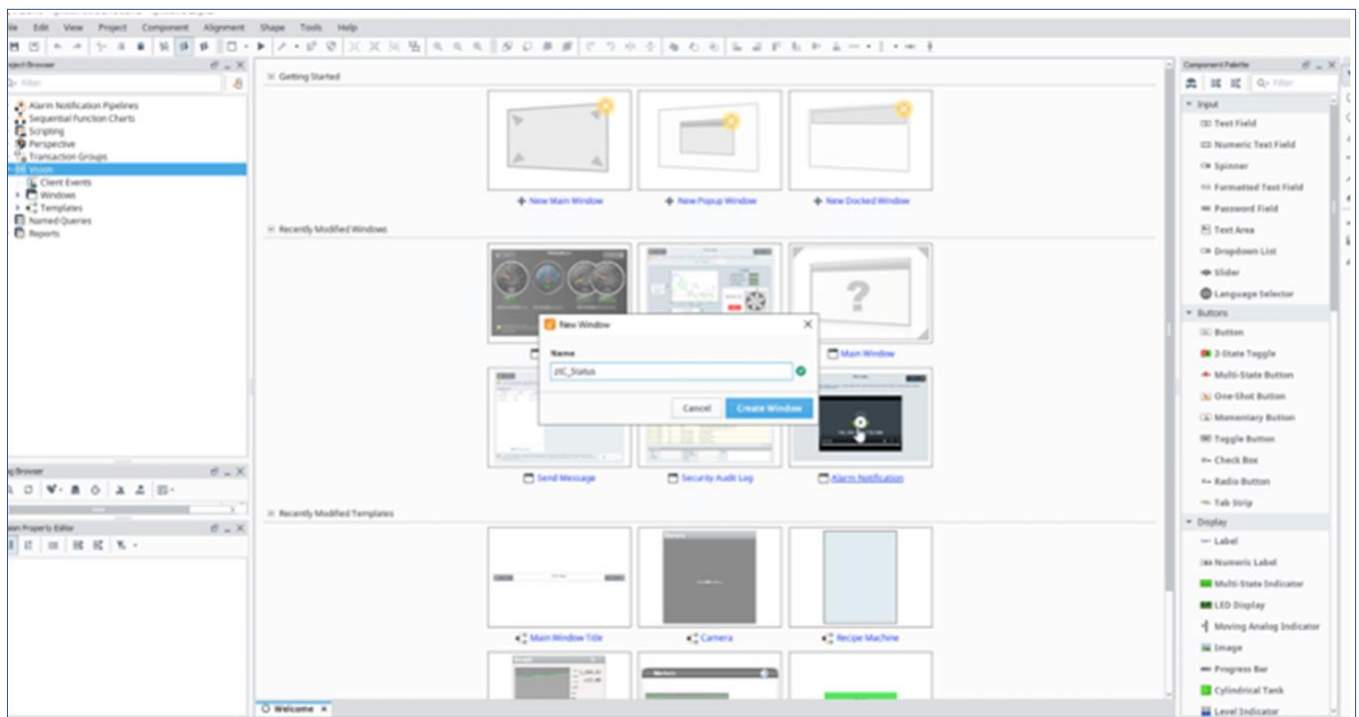
Drag the "Server" and "ztC" OPC tag folders to the newly created "ztC_OPC" folder to create shortcut for the ztC OPC Tags

16. You should be able to see the live value next to the ztC OPC tags

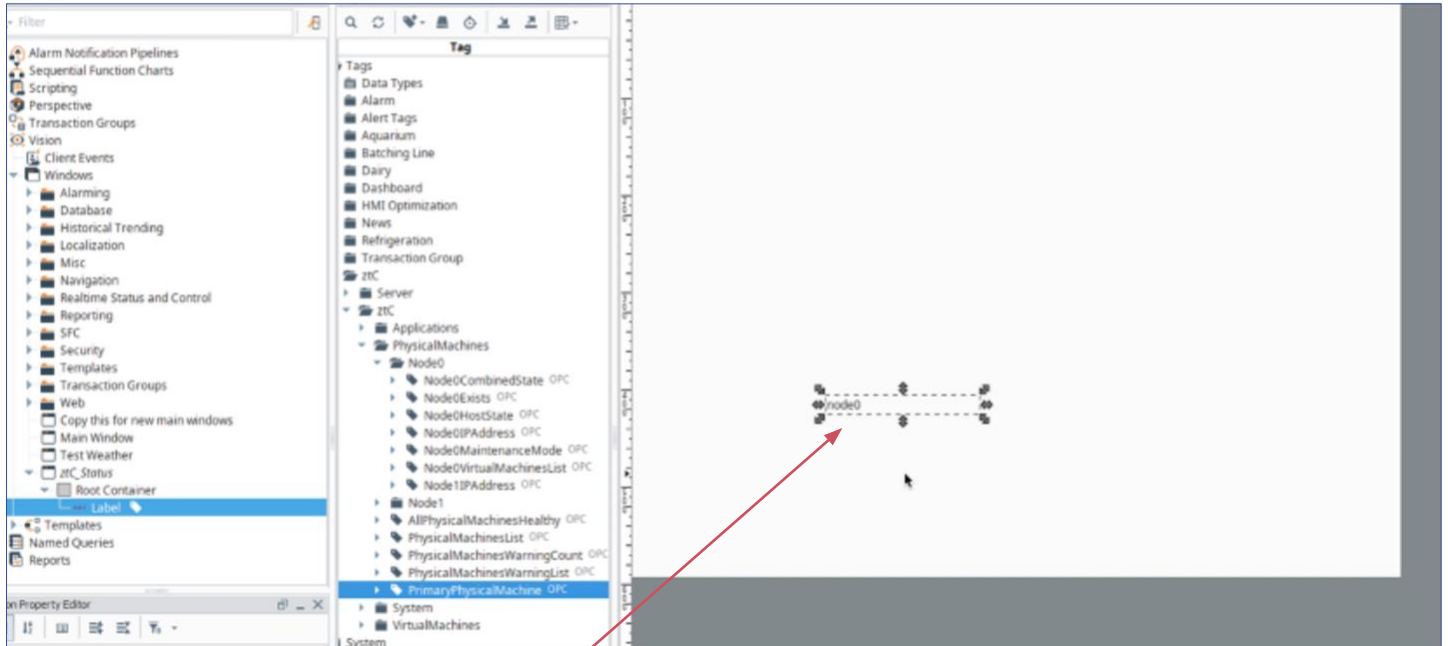
Server			
ztC			
Applications			
PhysicalMachines			
Node0			
Node0CombinedState OPC	running		String
Node0Exists OPC	<input checked="" type="checkbox"/>		Boolean
Node0HostState OPC	running		String
Node0IPAddress OPC	192.168.0.198		String
Node0MaintenanceMode OPC	normal		String
Node0VirtualMachinesList OPC	Array[3]		String Array
Node1IPAddress OPC	192.168.0.198		String
Node1			
AllPhysicalMachinesHealthy OPC	<input checked="" type="checkbox"/>		Boolean

Create new ztC Status Window in Vision

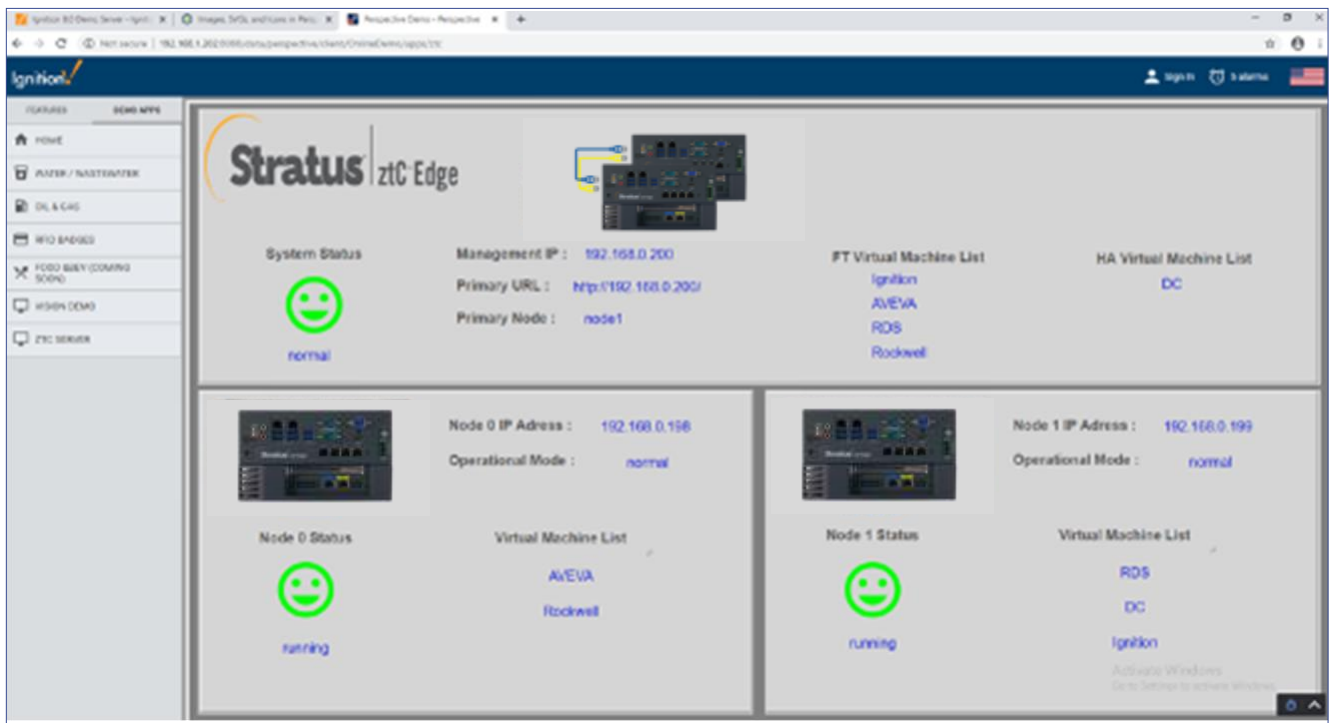
1. Select Vision and then “New Main Window”
2. Call it “ztC_Status”



3. Once the new display is open you can now drag and drop any ztC OPC tag from the “ztC_OPC” folder to display and select “Display.... Label” and the tag will instantly update on the new ztC Status screen.



4. At this point you can now create a ztC Status graphic any way you prefer using all the standard features of Ignition. See example below.



This completes the ztC OPC UA integration into Ignition